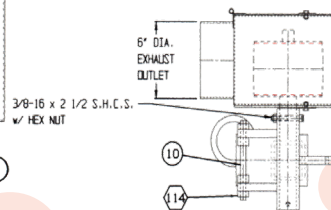
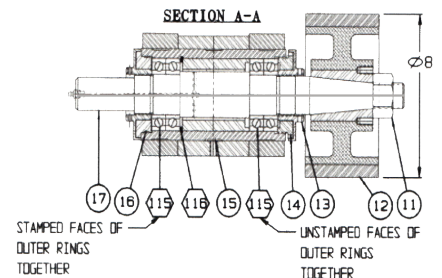
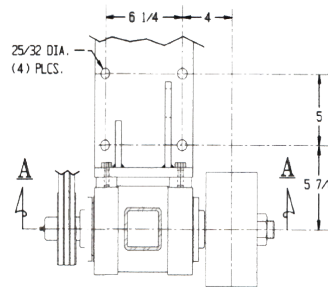
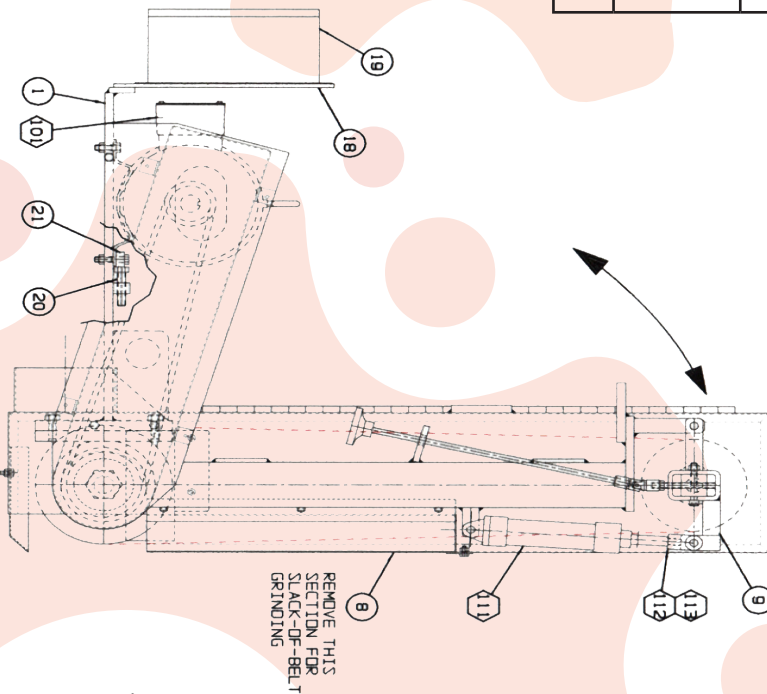
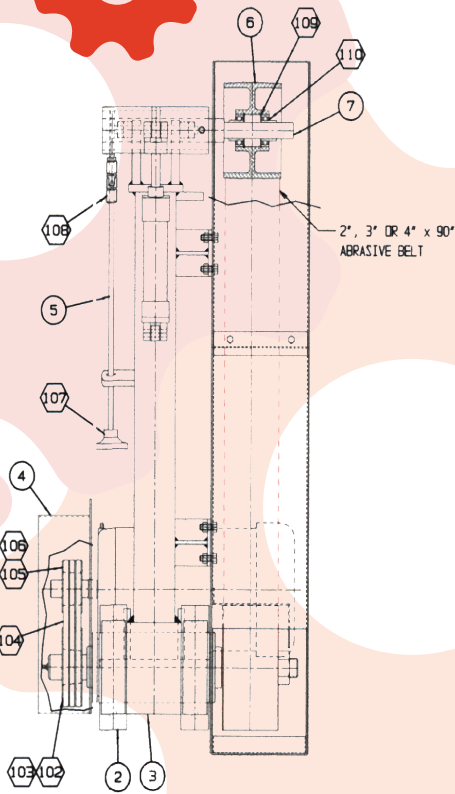


# SK-3335 RG SERIES ROLL GRINDER

## BULLETIN SK-3335

| ITEM | PART NO.    | QTY | DESCRIPTION                              |
|------|-------------|-----|--|
| 1    | M-11201-D   | 1   | MOTOR MOUNTING PLATE (5 & 7 1/2 HP ONLY) |
| 1    | M-11182-D   | 1   | MOTOR MOUNTING PLATE (10 & 15 HP ONLY)   |
| 2    | M-11176-C   | 2   | HOUSING SUPPORT                          |
| 3    | M-11442-E   | 1   | TUBULAR MEMBER                           |
| 4    | M-11200-D   | 1   | V BELT GUARD (5 & 7 1/2 HP ONLY)         |
| 4    | M-11184-D   | 1   | V BELT GUARD (10 & 15 HP ONLY)           |
| 5    | M-11440-C   | 1   | TRACKING ROD ASSEMBLY                    |
| 6    | M-9426-E-1  | 1   | IDLER PULLEY                             |
| 7    | M-11441-C   | 1   | IDLER SHAFT                              |
| 8    | M-11448-E-2 | 1   | ABR. BELT GUARD                          |
| 9    | M-11439-C   | 1   | SUPPORT HOUSING                          |
| 10   | M-11480-B-3 | 1   | PIVOT SHAFT                              |
| 11   | M-245-A     | 1   | HEX NUT - R.H. THREADS                   |
| 11   | M-1978-A    | 1   | HEX NUT - L.H. THREADS                   |
| 12   | M-1116-C    | 1   | CONTACT WHEEL - 8" DIA.                  |
| 13   | M-11175-C-1 | 2   | NUT - INNER RACE                         |
| 14   | M-11173-C-1 | 1   | NUT - OUTER RACE                         |
| 15   | M-11172-C-1 | 1   | BEARING HOUSING                          |
| 16   | M-1174-C-1  | 1   | RETAINER -- OUTER RACE                   |
| 17   | M-11170-C   | 1   | SPINDLE - SPECIFY R.H. OR L.H. THREADS   |

|     |                |      |                                      |
|-----|----------------|------|--------------------------------------|
| 19  | M-11250-EA     | 1    | ELECTRICAL BOX & PANEL               |
| 20  | M-11438-B-1    | 1    | MOTOR ADJUSTING SCREW                |
| 21  | SK-1891-1      | 1    | PUSH BAR (5 & 7 1/2 HP ONLY)         |
| 21  | SK-1891-2      | 1    | PUSH BAR (10 & 15 HP ONLY)           |
| 101 | TEFC, 3600 RPM | 1    | MOTOR                                |
| 102 | 2/3VS. 0-1610  | 1    | SHEAVE (5 & 7 1/2 HP ONLY)           |
| 102 | 3/3VS. 0-1610  | 1    | SHEAVE (10 & 15 ONLY)                |
| 103 | 1610-1 5/8     | 1    | TAPER LOCK BUSHING                   |
| 104 | 3VX530         | 2    | V BELT (5 & 7 1/2 HP ONLY)           |
| 104 | 3VX500         | 3    | V BELTS (10 & 15 HP ONLY)            |
| 105 | 2/3V3.65-1610  | 1    | SHEAVE (5 & 7 1/2 HP ONLY)           |
| 105 | 3/3V3.65-1610  | 1    | SHEAVE (10 & 15 HP ONLY)             |
| 106 | 1610-1 1/8     | 1    | T.L. BUSHING (5 HP ONLY)             |
| 106 | 1610-1 3/8     | 1    | T.L. BUSHING (7 1/2 10 & 15 HP ONLY) |
| 107 | CL-13-PHK      | 1    | HAND KNOB                            |
| 108 | M-11468-B      | 1    | UNIVERSAL JOINT                      |
| 109 | N5000-206      | 2    | SNAP RING                            |
| 110 | YA100 RR       | 2    | BALL BEARING                         |
| 111 | MP-2           | 1    | AIR CYL. (2" BORE x 4" STROKE)       |
| 112 | RC-0500        | 1    | ROD END CLEVIS                       |
| 113 | PP-0500        | 1    | PIVOT PIN                            |
| 114 | 1/2 DIA.       | 2    | SHAFT COLLAR                         |
| 115 | 210HOL         | 2 PR | BALL BEARING                         |
| 116 | N5000-354      | 1    | SNAP RING                            |



**GRINDING & POLISHING MACHINERY CORPORATION**

2801 TOBEY DRIVE / INDIANAPOLIS, IN 46219

PHONE (317) 898-0750 • FAX (317) 899-1627